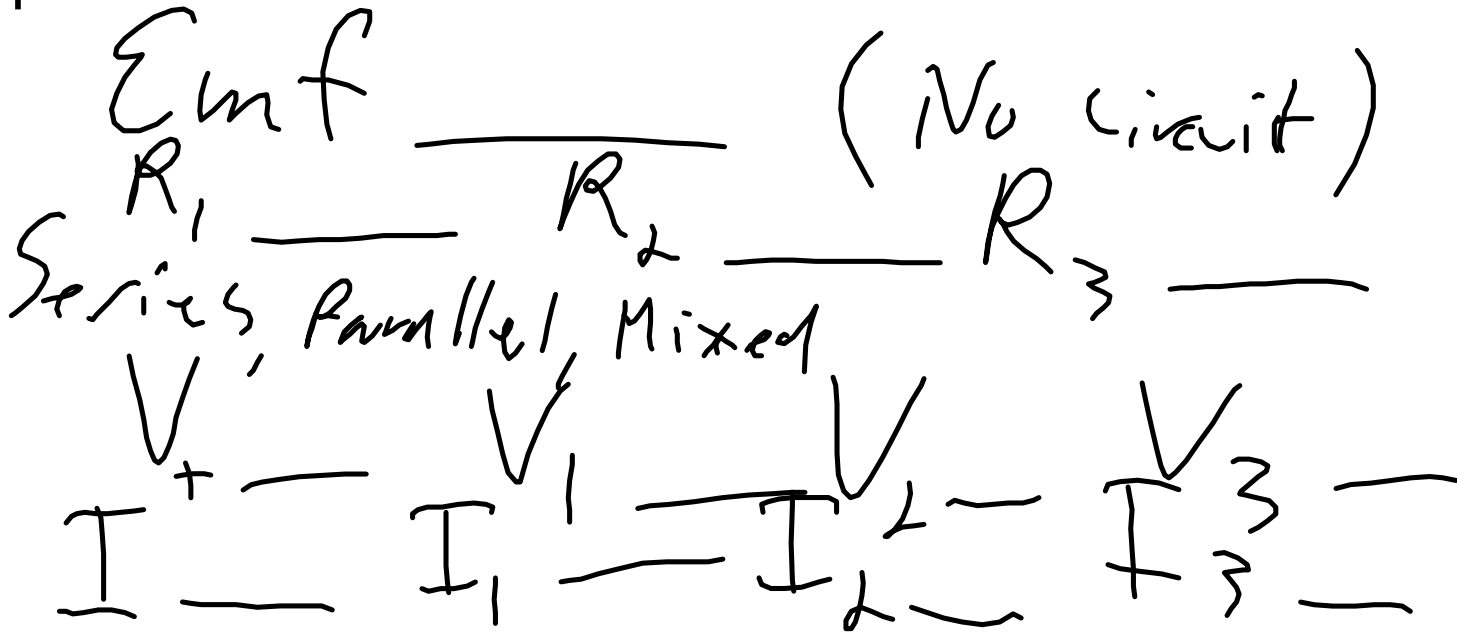


p85-89



Title, name, block

purpose, hypothesis (kirchhoff and resistor),

procedure (refer to lab manual p85-89),

observations, analysis - check R_t , check Kirchhoff,

conclusion and sources of uncertainty - compare

deviation to estimated uncertainty - resistors are

generally 5% tolerance

Friday, February 09, 2018
12:21 PM